



CHAMBER FURNITURE



## WHO WE ARE

We've been designing, making and installing handmade kitchens and bespoke furniture for over 20 years. A lot has changed in that time: styles and trends have come and gone; and our own business has grown from small local firm to mid-sized national player employing more than 40 people.

It's those people that make us who we are. Based in our purpose-built factory and showroom facility, they design, make, and above all think through every element of your project. You'll see that careful consideration and attention to detail in everything

we do, from proportions and materials to handles, hinges, and closure mechanisms. It's also the common thread running through every project we undertake, whether it's a single room, your entire home, or a commission for a property developer, architect or other professional client.

When you engage us, you're getting more than just beautiful, one-of-a-kind results: you're dealing with people who care as much about this as you do. That's what makes us, and our furniture, unique. We look forward to working with you soon.



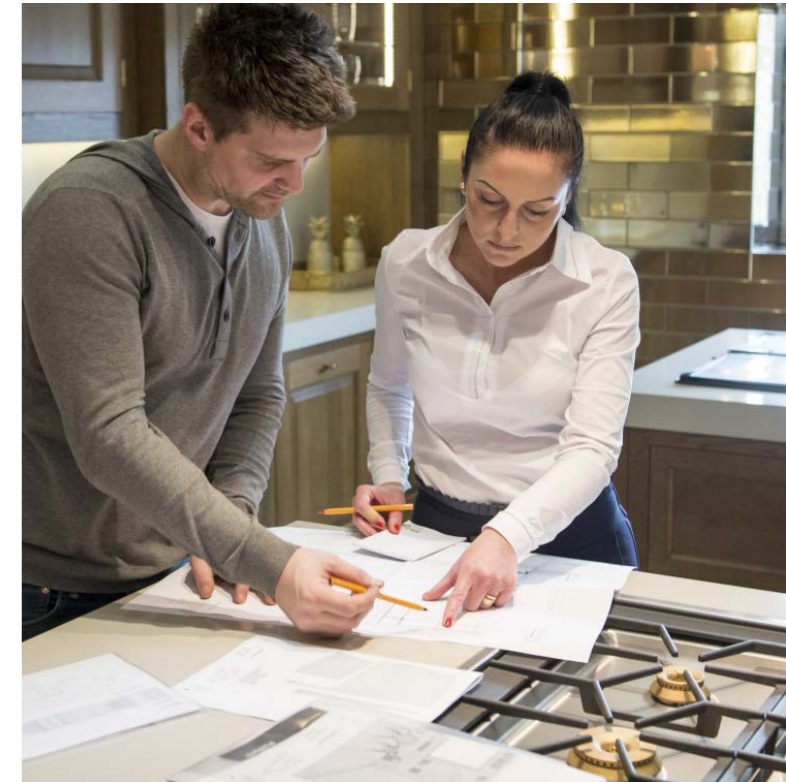
*Our purpose-built facility is situated 5 minutes from Junction 4 of the M25.*

Designers. Makers.  
Thinkers. Partners.





## DESIGN



## A proven process, with remarkable results.

Your home and your requirements are entirely unique. Which is why every Chamber Furniture project begins with one of our professional designers being assigned to work with you. They'll meet with you, either in our showroom or in your home to create a detailed brief and get a real insight into what you would like to achieve. Your specific designer continues to work with you throughout the process and will always be on hand to advise, assist and reassure.

A good overview from a professional eye can give a different insight and perspective; whether it's taking down a wall, or perhaps re-modelling an

existing space rather than adding an extension, or simply repositioning a door or relocating a boiler, our designer's role is to create the best space possible for you.

Using the latest BIM & CAD software, we'll produce photo-realistic digital mock-ups, so you can see exactly how your finished room will look. Our approach is considered, collaborative and entirely unpressured: we work at your pace and go through as many revisions as you need to get the design absolutely as you want it. Because in our experience, the only way to get the desired result is to start from the right place.

## MANUFACTURE AND INSTALLATION

Your furniture will be made entirely in-house, by us, for you. We don't have standard sizes or ranges, and we believe only our own people can achieve the levels of workmanship, fit and finish you and we demand.

Traditional or modern, ornate or minimalist, you have complete freedom regarding materials, finishes and accessories. Whatever you choose, we'll select the highest grade timbers, to minimise subtle grain differences for a consistent harmonious look: all our timber is sustainably sourced, with all waste going to heat our factory rather than landfill.

We combine the latest CNC cutting equipment with time-honoured joinery techniques like dovetailed joints to ensure your furniture is both millimetre-precise, and strong enough to last a lifetime. All finishing, from painting and staining to lacquers, French polishing and burnishing, is undertaken in-house.

Finally, everything is fitted by our own employed installers, assisted where required by trusted subcontractors. This means we remain in complete control throughout to ensure every element is fitted and finished to the highest standards.

**Your project is in the  
best possible hands.**



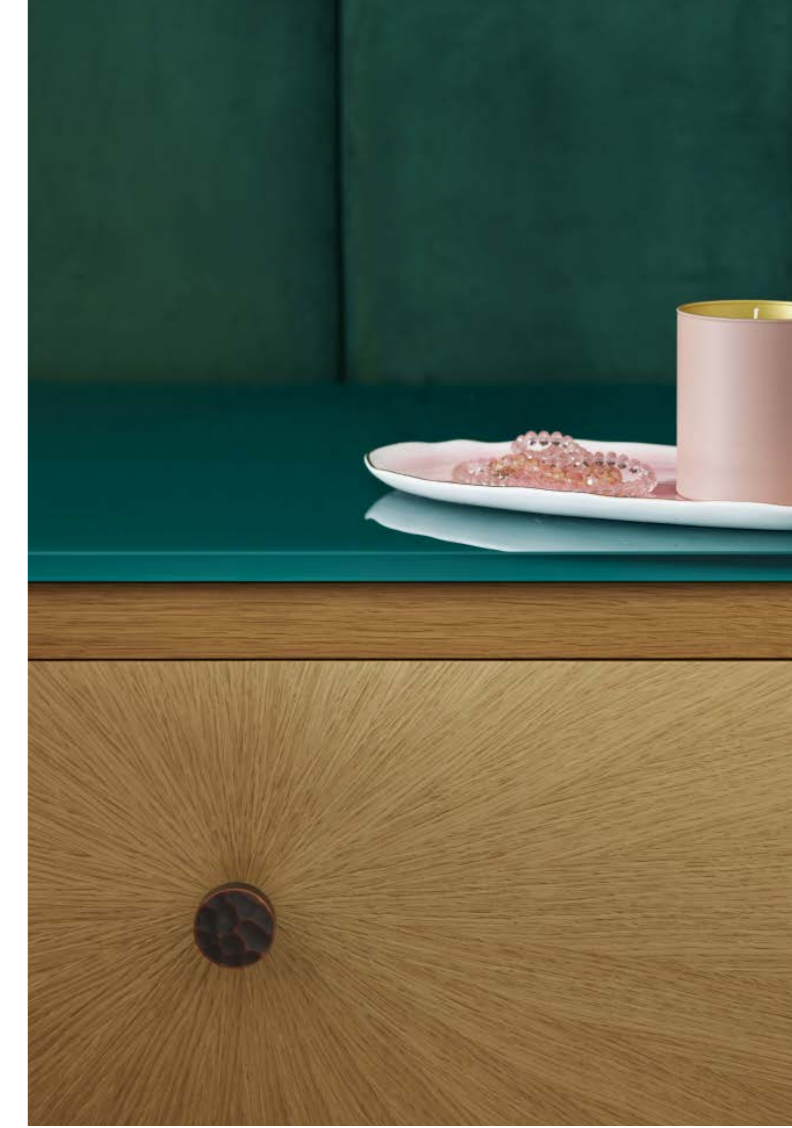
**JOB NO. 5975**

London

Panelled mirrored ceiling, flush mounted gas hob, secret doors, book-matched wood veneers

**A complete refurbishment of a beautiful Arts and Crafts house.**

We were commissioned to design, manufacture and install a wide variety of bespoke furniture for every room of this beautiful period property. As part of a major refurbishment of this family home we worked with the interior designer to mix materials, textures, fittings and the latest appliances to create these spectacular interiors.

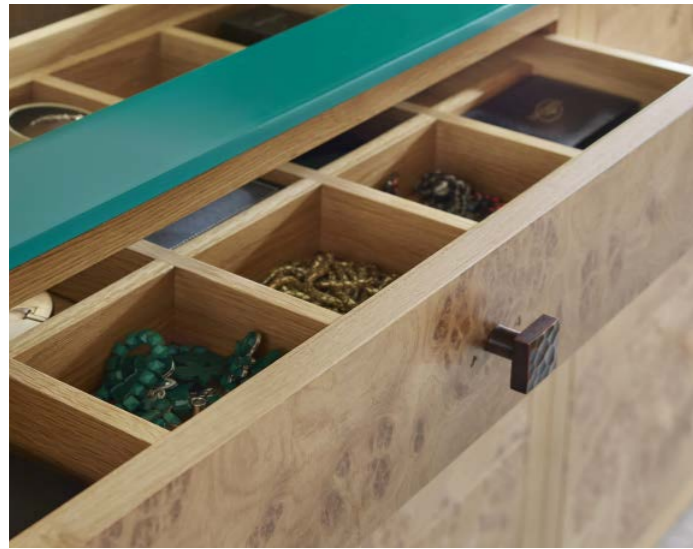




The kitchen cabinets are clear-lacquered, book-matched veneer walnut with shadow-gap handle detailing. The 80mm thick worktops are Okite Bianco Assoluto quartz and the matching island features a flush-mounted Gaggenau gas hob. The perfectly symmetrical floor-to-ceiling cabinets incorporate built-in, handleless Gaggenau appliances, including multiple ovens, fridge and slimline freezer.



The bedroom is filled with our signature details, including handmade dovetailed joints in the drawer inserts, and a secret door on 3D concealed hinges leading to a dressing-room created by a new internal wall. The wardrobe doors and dressing table feature a variety of clear-lacquered oaks, complemented by handmade copper handles.





For the master en-suite, we created a 'floating' double drawer vanity unit and a large double wardrobe in stained grey oak with bone handles by Ochre; countertops are by Stone Italiana. The cabinets have mirror fronts and demisting pads, and are mounted on Jewels Porcelain Calcutta Natural walls.



**JOB NO. 5870**

Kent

**Solid stained oak  
furniture, handmade  
bronze handles, wine  
conditioning unit and  
storage solutions**

**A contemporary update to a stone-built country residence.**  
We designed, manufactured and installed a sleek modern kitchen and utility room for this substantial yet sympathetic addition to our clients' rural period property. The project combined traditional materials and construction methods with modern finishes, state-of-the-art appliances and clever, unobtrusive storage solutions that made the optimum use of space.





The substantial kitchen island features a waney-edge breakfast bar. The cabinets are factory sprayed in Liquid Metal Copper finish, with a Gaggenuau induction hob flush-fitted into the Caesarstone Calacatta Nuova Quartz worktop. Other clever details include deep pan drawers that operate on touch electric mechanisms.



The stained oak boot room furniture conceals a radiator with a grille in the seat top. The full-height oak wall-panelling is teamed with overhead storage cabinets which open on invisible touch latches.



The flush stained oak kitchen furniture incorporates fitted appliances including Gaggenau conventional, steam and microwave ovens, wine conditioning unit, fridge and freezer.

HIGHLIGHTS

“

From kitchens to bedrooms, playrooms to wine rooms, and from Client projects spanning London and the southeast, here are some of our favourites

Each of these projects have been specifically designed to meet the unique needs of the client they have been produced for. For more details on any of these featured projects or to see our full portfolio of case studies, please head online to [chamberfurniture.co.uk](http://chamberfurniture.co.uk) or come and visit us at our Kent showroom.





This traditional hand-painted kitchen furniture has raised-and-fielded door panels set in staff-bead frames, with ovolo-edged quartz worktops: we designed and made curved doors for the end of the kitchen island. The drawer boxes are made in solid walnut with dovetailed joints. A brass articulated pot filler tap from Waterworks completes the classic look.



The kitchen's back walls form part of the internal architecture of this ultra-modern extension to a Georgian rectory. Oversize cabinets house built-in Gaggenau ovens and were designed to match the room's proportions as well as line up with high level glazed window panels above. Large retractable doors conceal a breakfast station, while another secret door leads to a boot room beyond.

This kitchen is installed in the Eco House of the Year, and blends minimalist white cabinets and Corian worktops with a cast polished concrete breakfast bar. There's also a touch of fun, with retractable door cabinets hiding vibrant

sunshine-yellow furniture, a prep sink and a microwave and breakfast station. The furniture has been built so it appears to float, giving tall outer cabinetry a lightweight feel. All appliances were chosen to meet the strict Code 6 eco standards.





We remodelled the interior architecture of this London property to create a large family kitchen and dining room. The design blends traditional furniture, including a mirrored dresser and sink-run cabinets, with an ultra-contemporary island. Handleless flush doors in Farrow & Ball Studio Green gloss are teamed with a brown marble worktop, and the cast iron central column provides a focal point and complements the room's overall look and feel.

CUSTOMER TESTIMONIALS

“

“They took care of everything from design through to installation working well with all of the builders and making the process for us as simple and seamless as possible. I would highly recommend them.”

Mr & Mrs Baker

“

“There is not only creative flair at the outset but also excellent project management throughout and a culture of minimising hassle for the customer before and after installation. It all went seamlessly, on time and on budget. Brilliant!”

Mr & Mrs Hart

“

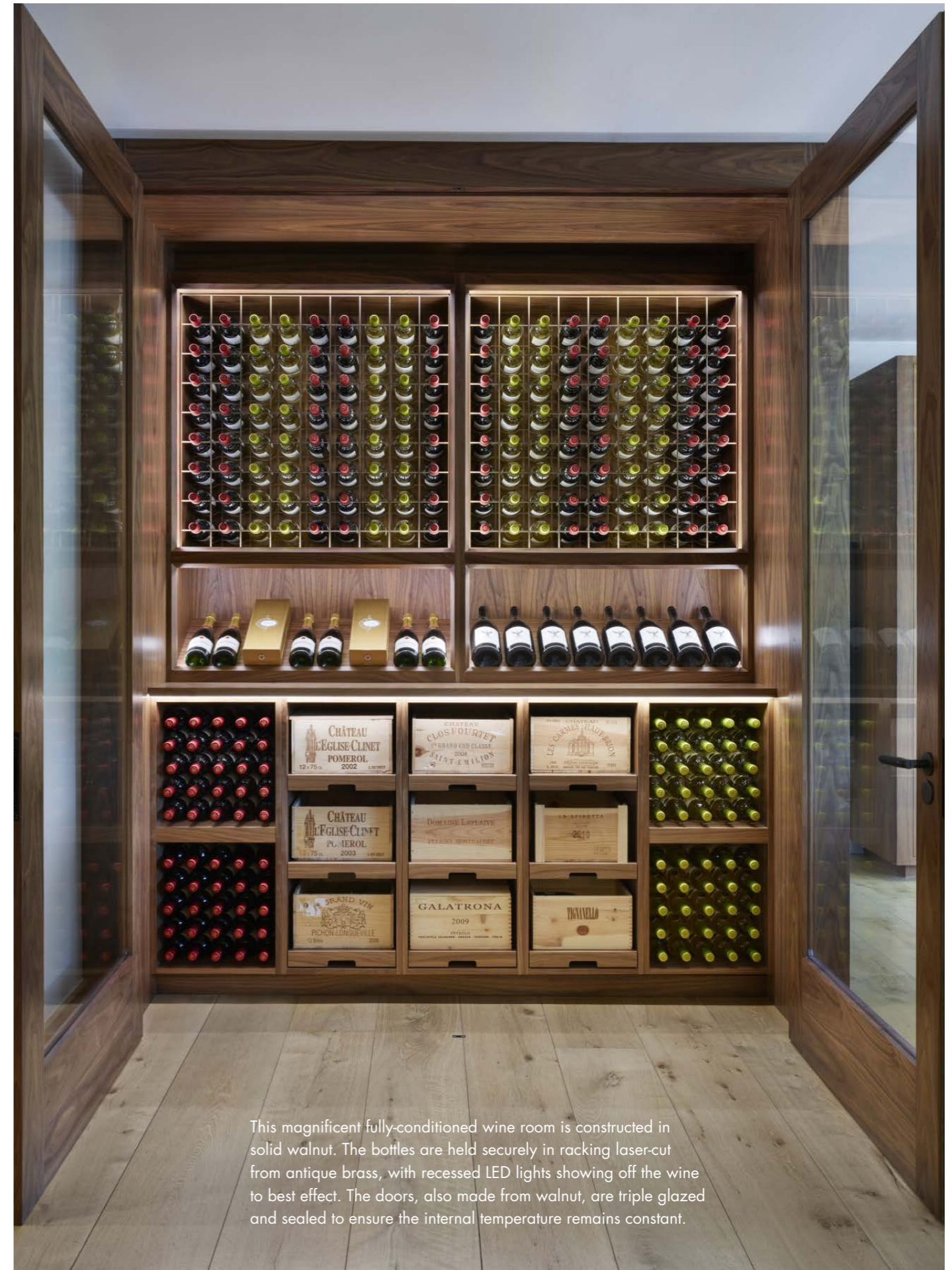
“A fantastic British company that can deliver truly bespoke kitchens and furniture. Having used a lot of kitchen companies definitely the best finished product and quality we have ever seen.”

Mrs N Butcher

“

“First class service from the initial discussion, throughout the multiple revisions of the design, through to the end result. A beautiful piece of furniture that looks perfect and meets all the requirements we needed.”

Mrs Petrone



This magnificent fully-conditioned wine room is constructed in solid walnut. The bottles are held securely in racking laser-cut from antique brass, with recessed LED lights showing off the wine to best effect. The doors, also made from walnut, are triple glazed and sealed to ensure the internal temperature remains constant.

This beautiful, grown-up playroom has a floating media unit made from rough-cut sawn oak, and simple white factory-sprayed boxes for wall storage and display. The children's bedroom has open storage for display; the simple flush wardrobes and desk are factory sprayed in a vibrant shade of green to give the room a fresh, lively feel.





Built to the ceiling, these traditional three-panel wardrobes are hand-painted and furnished with handmade antique brass handles and hinges; plaster room coving running around the face gives a timeless, elegant finish. The burr walnut island has curved sides and drawer fronts, with clear areas in the black glass top displaying the contents of the drawers below. The his-and-hers wall mirrors open to reveal storage behind.



Constructed in walnut, the fully conditioned wine storage is set behind a black Crittal glass screen and door. The racking is laser-cut from antique brass, with recessed LED lights and a backlit onyx centrepiece creating instant visual impact. The contemporary kitchen features flush-fitted stained walnut doors in a simple shadow-gap handless design beneath sleek quartz worktops.





This traditional hand-painted Shaker-style kitchen disappears completely behind flush, bi-folding retractable doors made from fumed oak. A drinks cabinet and Gaggenau wine storage unit make this an area perfect for entertaining, which can be transformed as required. On the right-hand side, a secret door leads to a utility area behind.

## LET'S DISCUSS YOUR PLANS

We believe it's never too early to speak to a designer and we are always happy to take the time to discuss your project and ideas, no matter what stage you are at in the process. We find that the best results often come from being involved as early as possible so please don't hesitate to contact us.

### ARRANGE A CONSULTATION OR JUST DROP IN

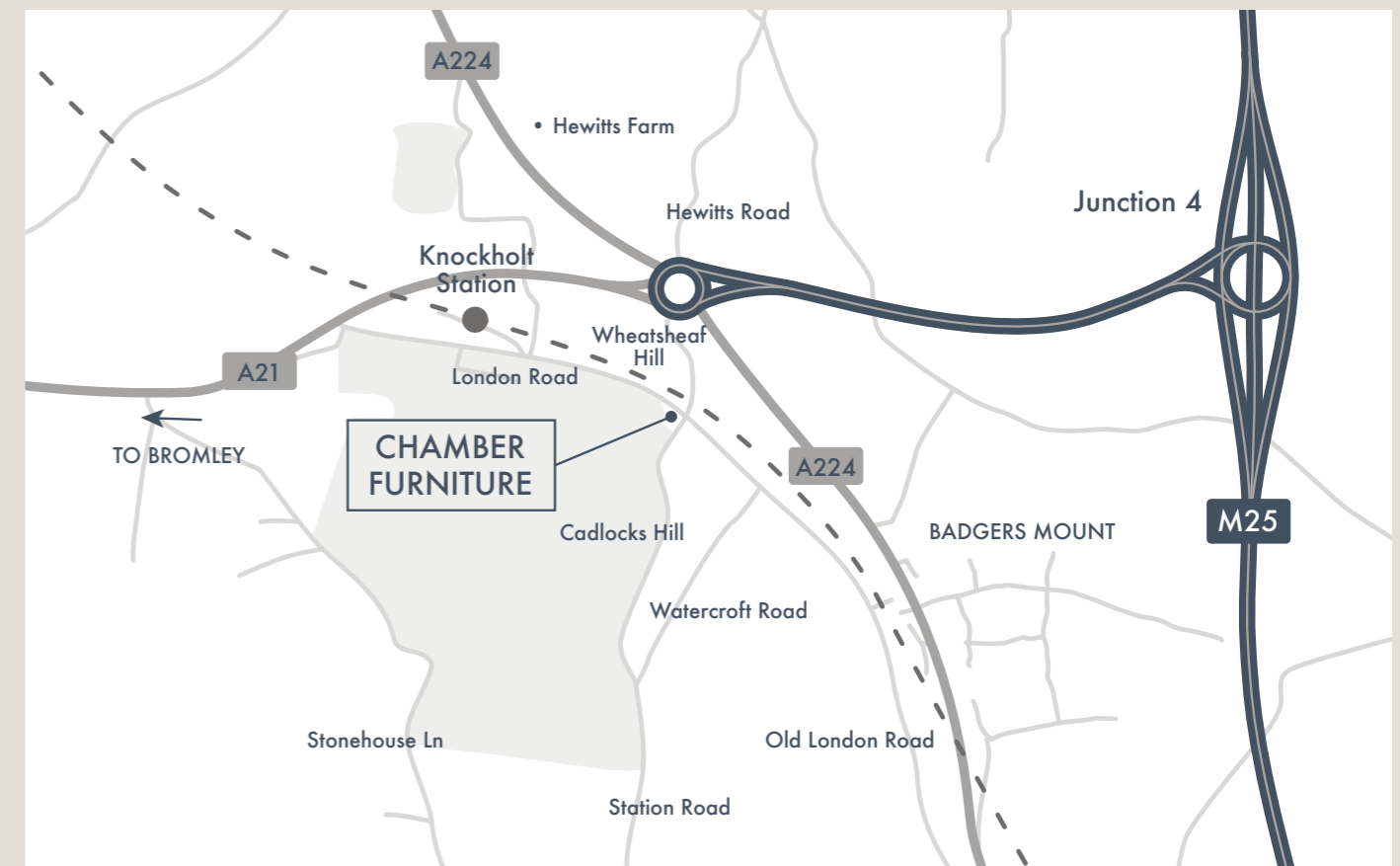
To arrange a meeting with one of our designers, either at your property or in our showroom, please call us on 01959 532 553.

Alternatively, come and browse around our showroom. No appointment is necessary. It's open from 9am to 5.30pm Monday to Friday & 9am to 2pm Saturdays.

If you have Architects plans or drawings then feel free to email them to [info@chamberfurniture.co.uk](mailto:info@chamberfurniture.co.uk) and one of our designers will be in contact.

Visit [chamberfurniture.co.uk](http://chamberfurniture.co.uk) for further information and to see more of our projects.

Find us on social media: 



Chamber Furniture, The Old Timber Yard, London Road, Halstead, Kent, TN14 7DZ

